

KL-03

High Precision Intelligent Digital Level



High-tech, High precision

- Observation accuracy 0.3mm
- Compensation accuracy 0.2"
- "Precise Mode" can minimize error
- A dedicated barcode staff NIS20M

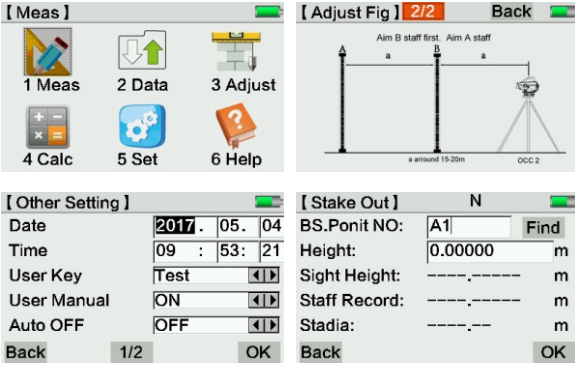
Intelligent Device, Greater Efficiency

- 3" TFT touch screen, intuitive display and operation
- Voice guide to prevent wrong operation
- USB pen drive and Bluetooth data export, no need of driver and card reader
- "Automatic Mode" can reduce user's workload and fatigue
- Remote control by data collector via Bluetooth, avoid vibration to instrument

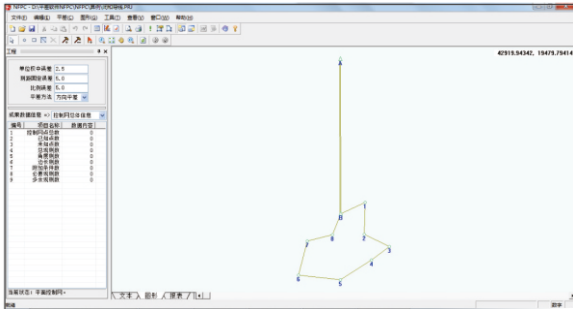
Design For Large Project & Night Work

- Backlight with screen/ button/ bubbles
- 3100mAh lithium battery works up to 20 hours
- Sleeping mode can extend working hours
- 128M onboard memory, saving 150,000 pts
- Trigger Key helps you measuring faster
- Protection level IP65

User Friendly



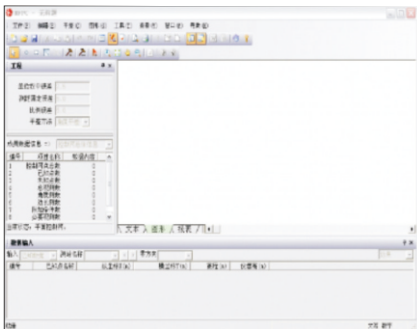
Colorful Icon Menu & Graphic Guidance



Powerful Post-processing Software

It contains adjustment routines for dynamic adjustment of horizontal & vertical control network and angle & direction adjustment.

Easily zoom in or out to see the overall data in graphic.



Seamless Transfer with Various Data Formats

| StationNum | SD_Length | AccLightDist.length | SD_Off | d | HeightOff |
|------------|-----------|---------------------|---------|---------|-----------|
| 1 | 35.2335 | 35.2335 | 0.1135 | 0.1135 | |
| 2 | 54.682 | 89.9155 | -0.262 | -0.1485 | |
| 3 | 48.915 | 138.8305 | -0.937 | -1.0855 | |
| 4 | 35.088 | 173.9185 | -0.458 | -1.5435 | |
| 5 | 37.1895 | 211.1080 | -0.615 | -2.2350 | |
| 6 | 55.139 | 266.2470 | 0.731 | -1.5840 | |
| 1 | 55.1430 | 55.1430 | -0.7300 | -0.7300 | |
| 2 | 37.1975 | 92.3465 | 0.5835 | -0.1465 | |
| 3 | 35.1025 | 127.4430 | 0.4855 | 0.3390 | |
| 4 | 48.9055 | 176.3485 | 1.0975 | 1.4365 | |
| 5 | 54.6470 | 230.9955 | 0.2040 | 1.6605 | |
| 6 | 35.2170 | 266.2125 | -0.3260 | 1.3345 | |

Precision Analysis & Report

The KL Data Download & Processor Software, makes the field work easier to display the complex leveling tasks.

Specifications

| Item | | KL-03 |
|--|-------------------|------------------------------------|
| Height Accuracy (standard deviation for 1km double run leveling) | Digital Reading | 0.3mm |
| | Optical Reading | 2.0mm |
| Distance Accuracy | Digital Reading | D≤10m:10mm;D>10m:D*0.001 |
| Distance Range | Digital Reading | 2m~110m |
| Minimum Display | HD | 0.01mm/0.1mm/1mm |
| | Distance | 0.1/1cm |
| Measuring Time | | within 3s in normal condition |
| Telescope | Magnification | 32X |
| | Resolving Power | 3" |
| | Field of View | 1°30' |
| | Multiple Constant | 100 |
| Compensator | Additive Constant | 0 |
| | Type | magnetic-damped |
| | Range | >±12' |
| Data Storage | Accuracy | 0.20"/1' |
| | Storage | 128MB |
| Data Storage | Point Name | increasing/decreasing/customized |
| | Connection | RS232/Bluetooth |
| | External Storage | USB Pen Drive |
| Circular vial Accuracy | | 8'/2mm |
| Display | | 3.0 inch LCD Colorful Touch Screen |
| Working Temperature | | -20°C~50°C |
| Dimension | | 230mmX225mmX203mm |
| Weight | | 2.5kg |
| IP Standard | | IP65 |

Invar Staff NSI-20M

| | | | |
|---|--|--------------------|----------|
| 1 | Circle Bubble | ≤12'/2mm | |
| 2 | Surface curvature distinction | ≤4mm | |
| 3 | Vertical of central axis and underside | ≤5' | |
| 4 | Tolerance of zero point | ≤0.05mm | |
| 5 | Basic barcode graduation tolerance | Deviation | ≤0.02mm |
| | | Standard deviation | ≤0.013mm |
| 6 | Interval tolerance | ≤0.04mm | |

KOLIDA

Professional's Choice

GUANGDONG KOLIDA INSTRUMENT CO., LTD.

Add: 7/F, South Geo-information Industrial Park, No.39 Si Cheng Road, Tian He IBD, Guangzhou 510663, China

Tel: +86-20-22139033 Fax: +86-20-22139032

Email: export@kolidainstrument.com http://www.kolidainstrument.com